

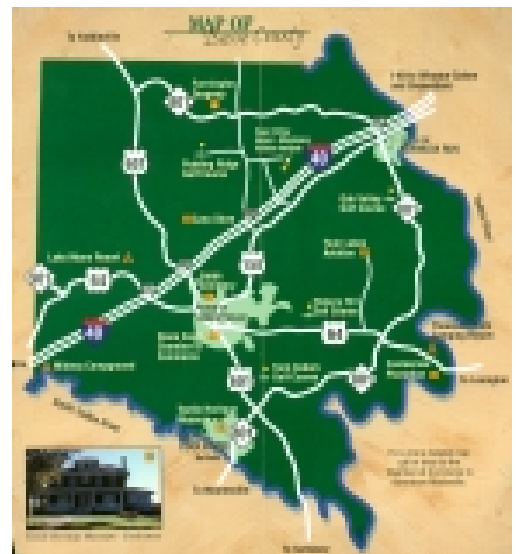
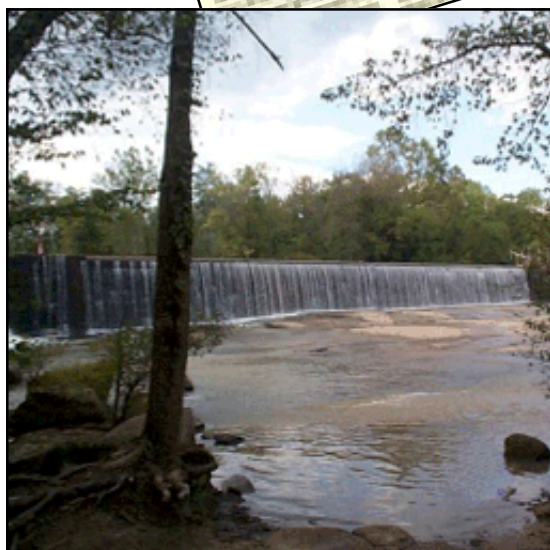


A remarkable grass-roots effort is underway in a small former cotton mill town in North Carolina named Cooleemee.

Its downtown Square had been completely demolished and its mill closed in the 60s. In 1997, when they discovered that its cherished "Bullhole" at the river was in danger from clearcutting and dewatering, this community of less than a thousand said, "no more!"

Six hundred rallied at the old mill and in sixteen months raised \$1.1 million to acquire the land and begin to create a nature park. Petitions were filed in Washington against the diversion of 97% of the water from the river's main channel til 2035.

Phase I of development was completed on the Rowan side and RiverPark at Cooleemee Falls held its Grand Opening in November, 2003. The Federal Energy Regulatory Commission has refused to consider an adequate compromise. Work continues.



FOR MORE INFORMATION ABOUT HOW YOU CAN HELP - CONTACT RIVERWATCH C/O
CHA, Box 667, COOLEEMEE, NC 27014 OR CALL (336) 284-6040. E-MAIL IS BLINKY1@YADTEL.NET



RiverPark at Cooleemee Falls-- “The Bullhole”

RiverPark opened on November 15, 2003

**Features large picnic shelter, canoe portage, hiking trails,
rest room facilities and a beautiful setting for fun and adventure**

RiverPark is open 8 a.m. - sunset, 7 days a week

Free to the Public

**Remember: if you're not a Rowan Co. resident you must have a NC license to
Fish. [Purchase at Cooleemee True Value Hardware Store.] WE
STRONGLY RECOMMEND YOU BRING A PAIR OF OLD TENNIS SHOES
IF YOU PLAN TO WADE IN THE WATER!**

**Directions: Located near Cooleemee, NC . From town go South on Hwy 801
over the river bridge into Rowan Co. Turn right (west) on Needmore Road
and right again on Erwin Temple Church Road, drive to end!**

**Picnic Shelter rentals: \$30 per half day. Call (336)
751-2325**

Volunteer Opportunities: call (336) 284-6040

Come Share Our Hidden Treasure!





Canoe portage above Cooleemee Dam at RiverPark now clears the way for a clear trip down the South Yadkin River from Cooleemee Junction Wildlife Access in Davie County to the Pump Station on the Yadkin River.

